

1. Firebird Database

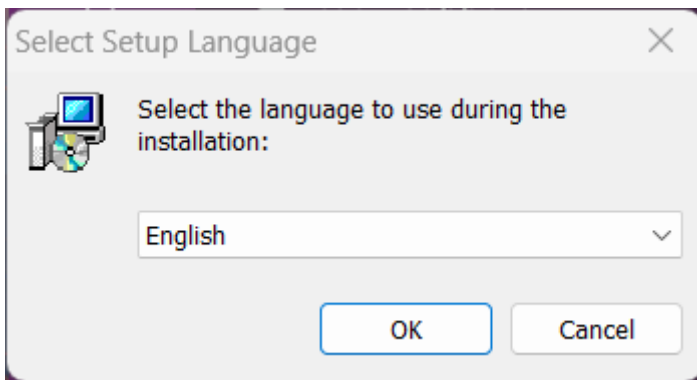
RaceManager requires Firebird Database. Firebird will need to be installed on the main RaceManager computer. If you set up multiple workstations, only the main RaceManager computer will need to have Firebird installed.

You can download the database installation file here

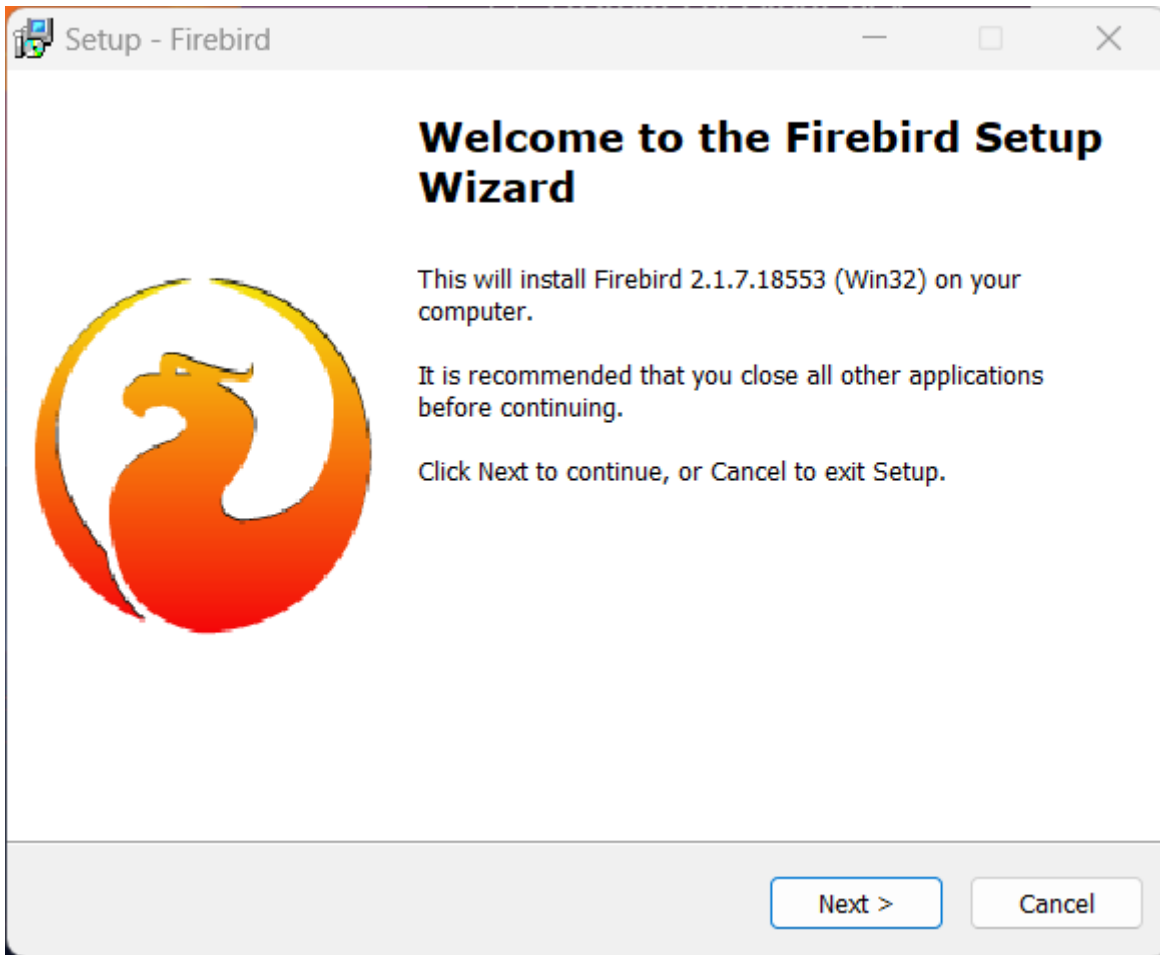
<https://enternow.co.nz/downloads/raceman/>

Run the setup file

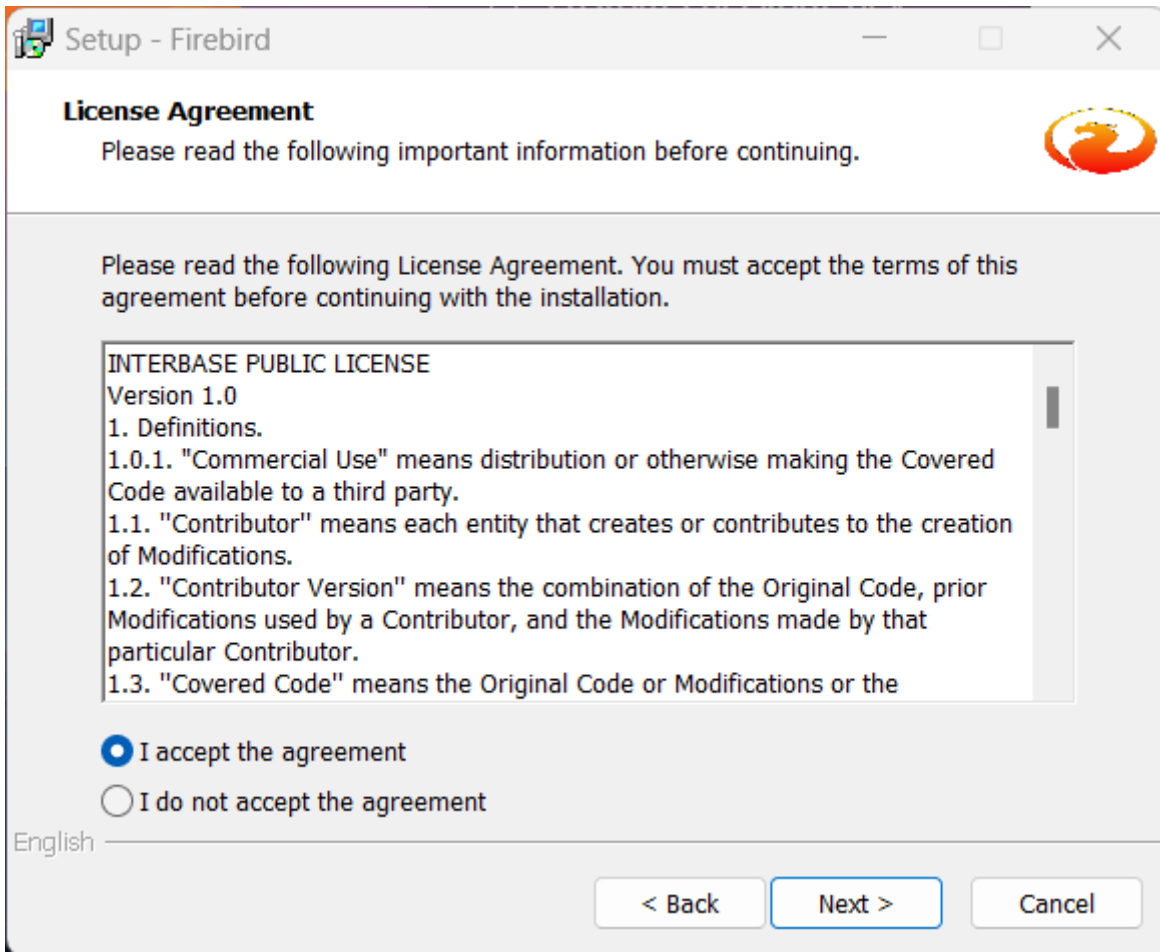
Choose English and press [OK]



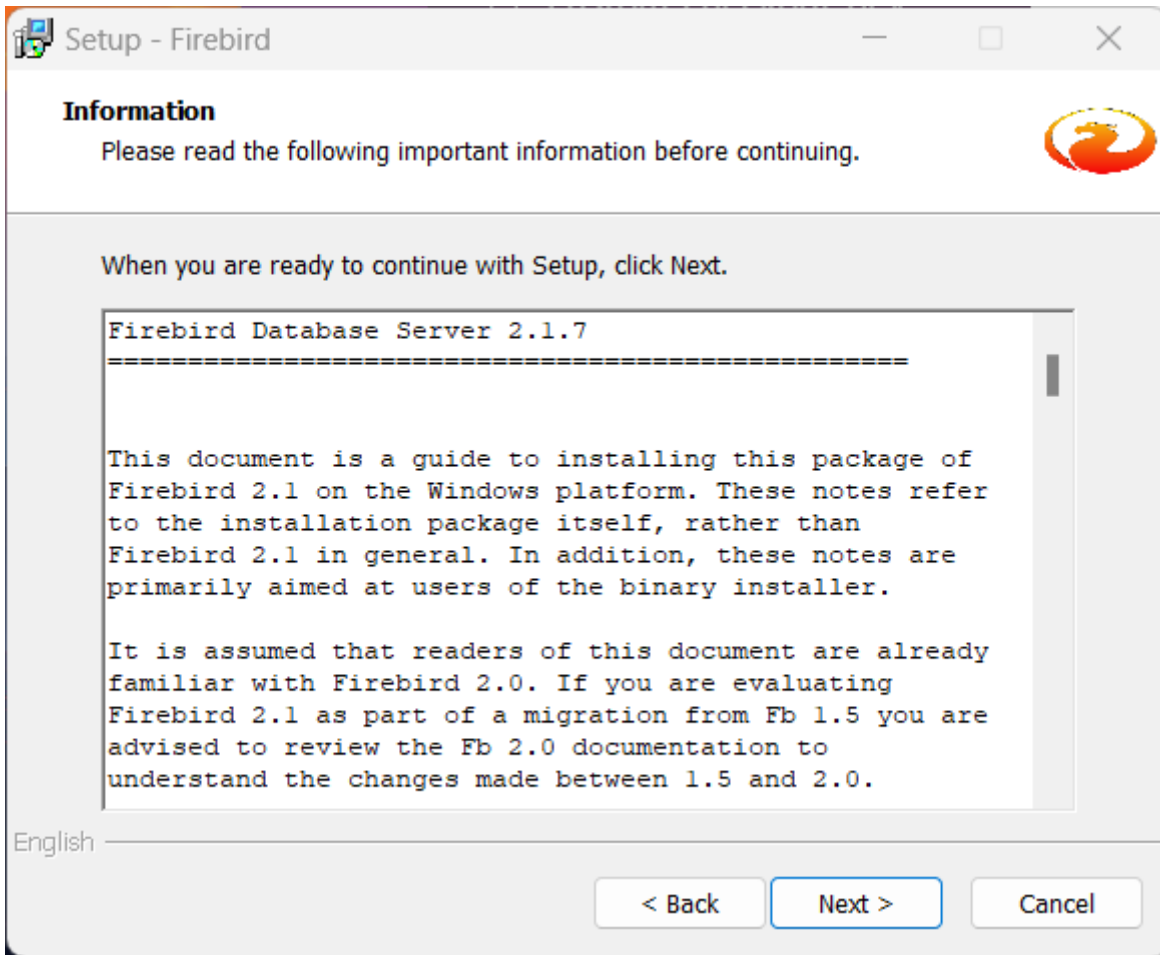
Click on [Next >]



Click on I accept the agreement, then click on [Next >]

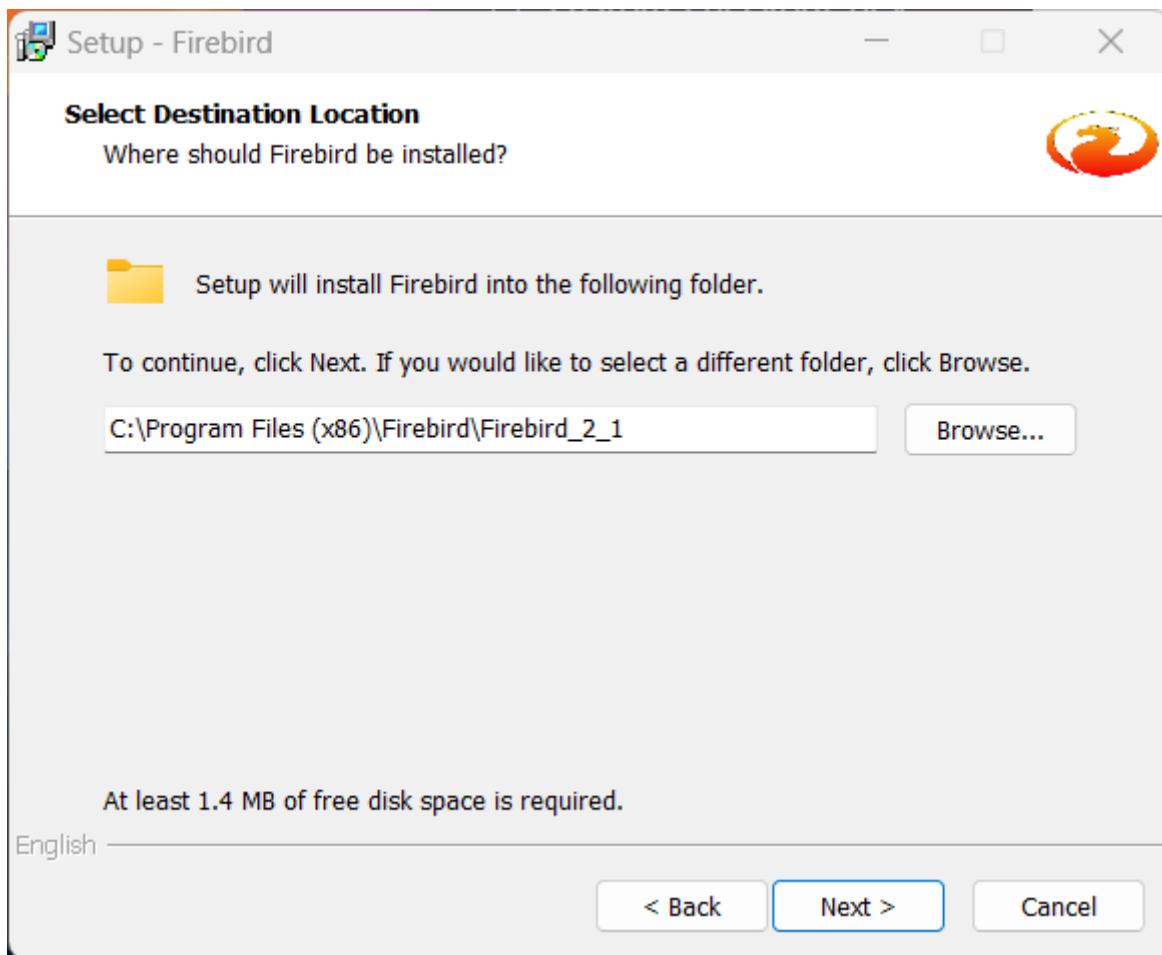


Click on [Next >]



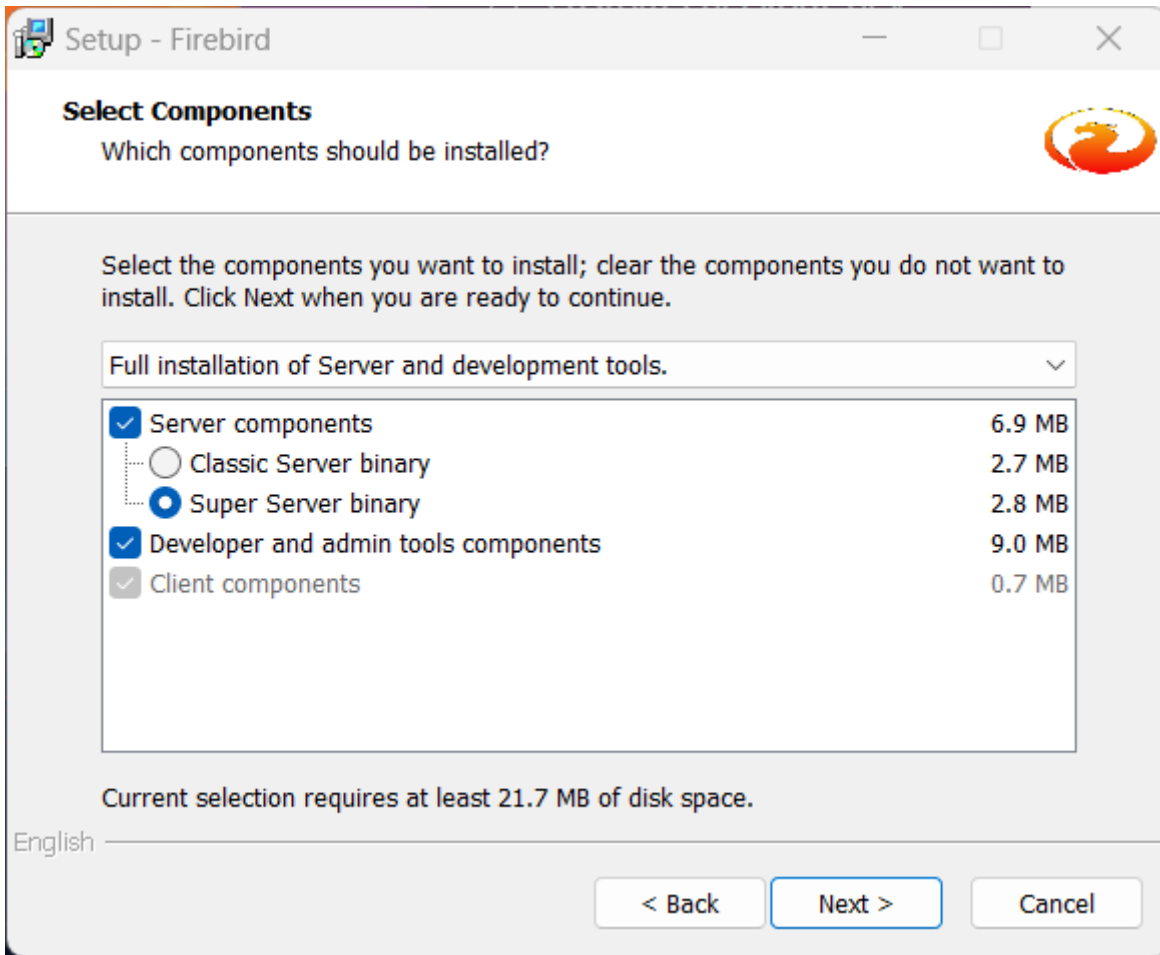
We recommend install Firebird in the default location, that is suggested.

Click on [Next >]

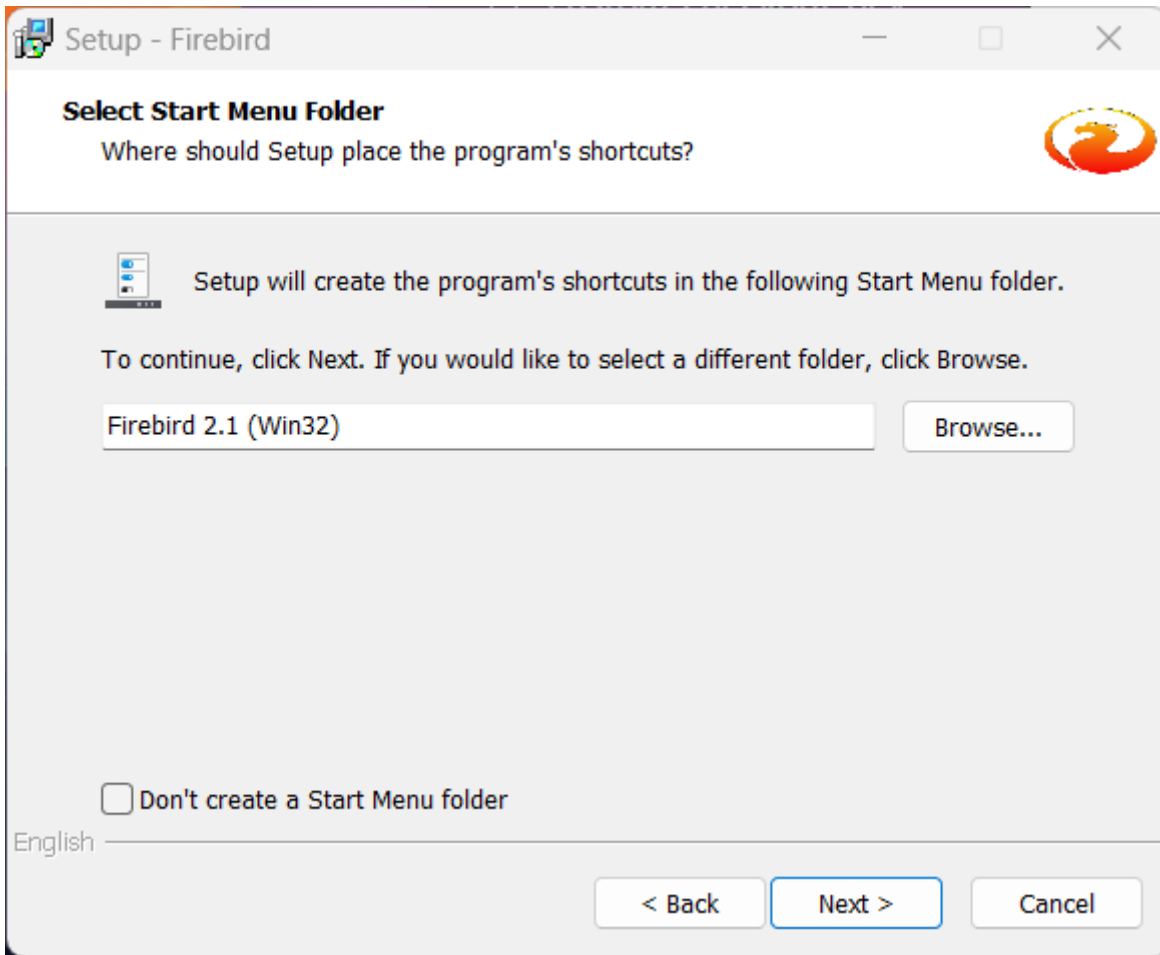


Make sure the selections, match this screenshot,

then click on [Next >]



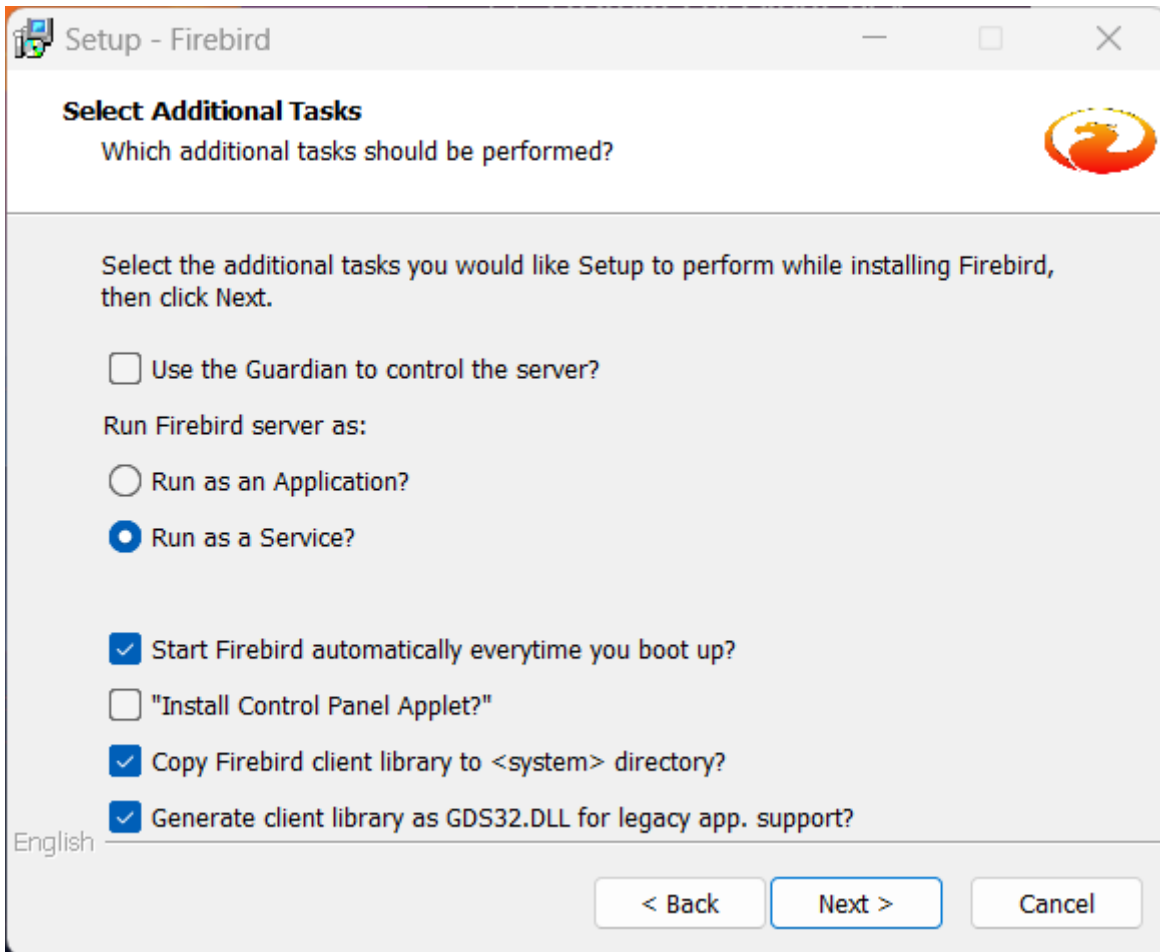
Leave the default Start Menu Folder, and click on [Next >]



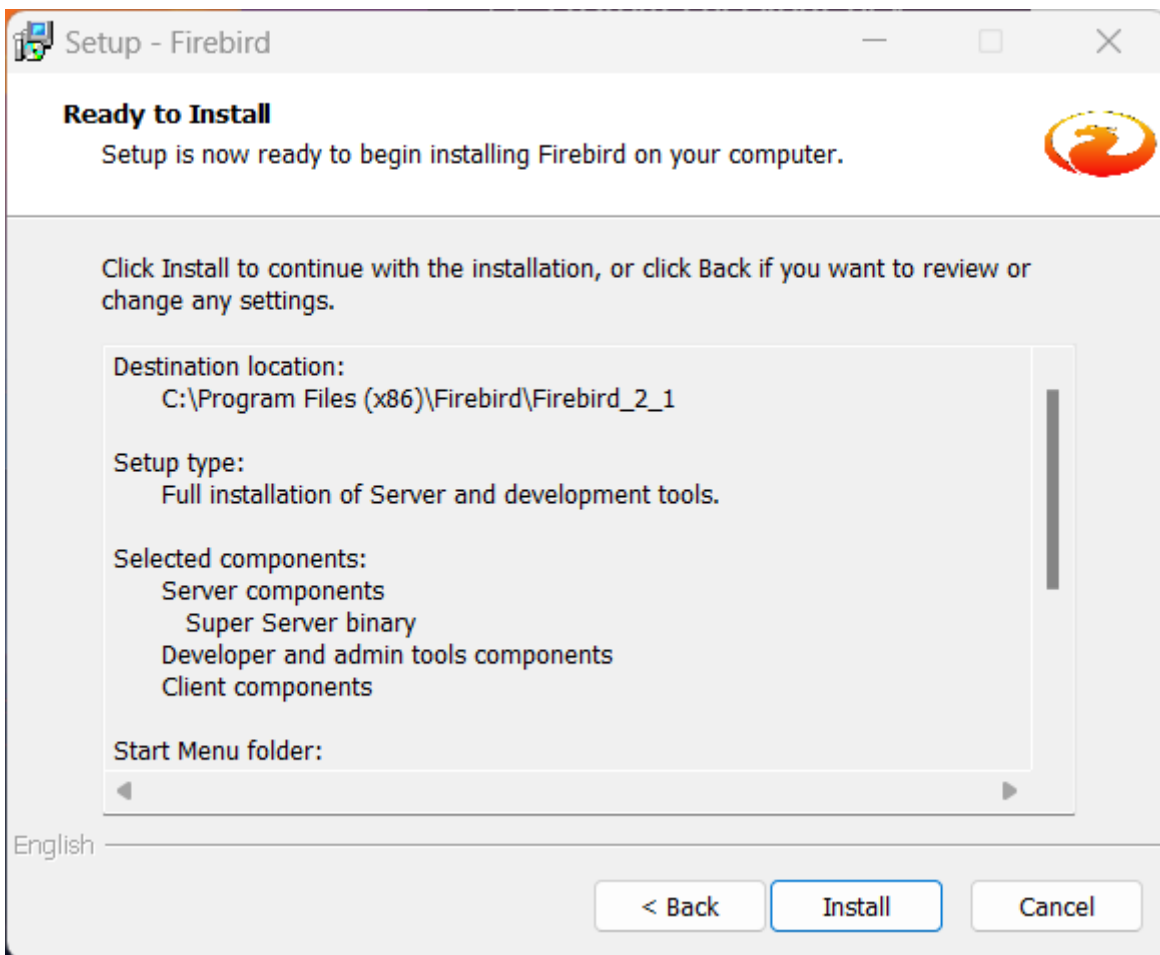
Important, make sure only the following options as selected, as per the screenshot

- Run as a service
- Start Firebird automatically everytime you boot up
- Copy Firebird client library to <system> directory
- Generate client library as GDS32. DLL for legacy app support

Click on [Next >]

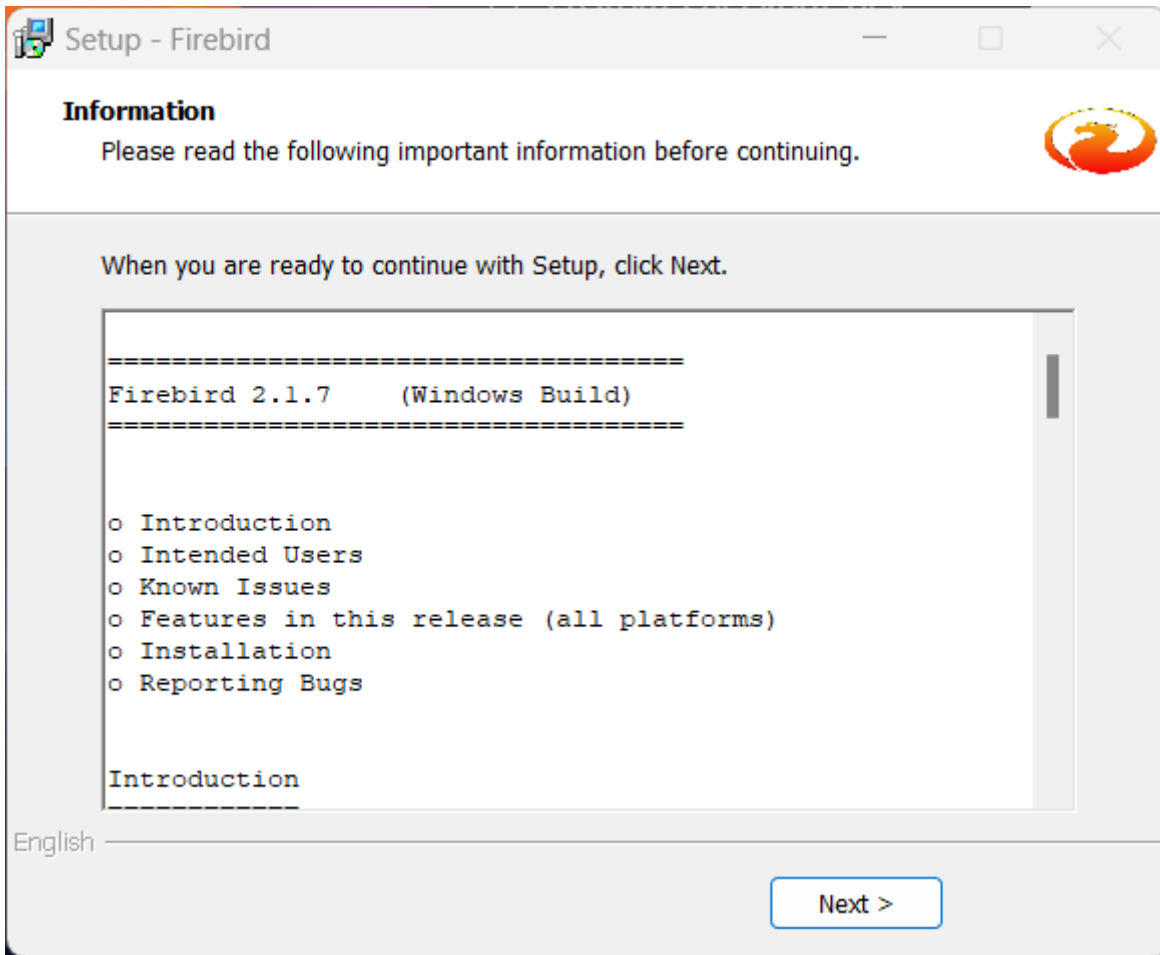


Click on [Install]



Once installation is complete, you will be shown the information screen

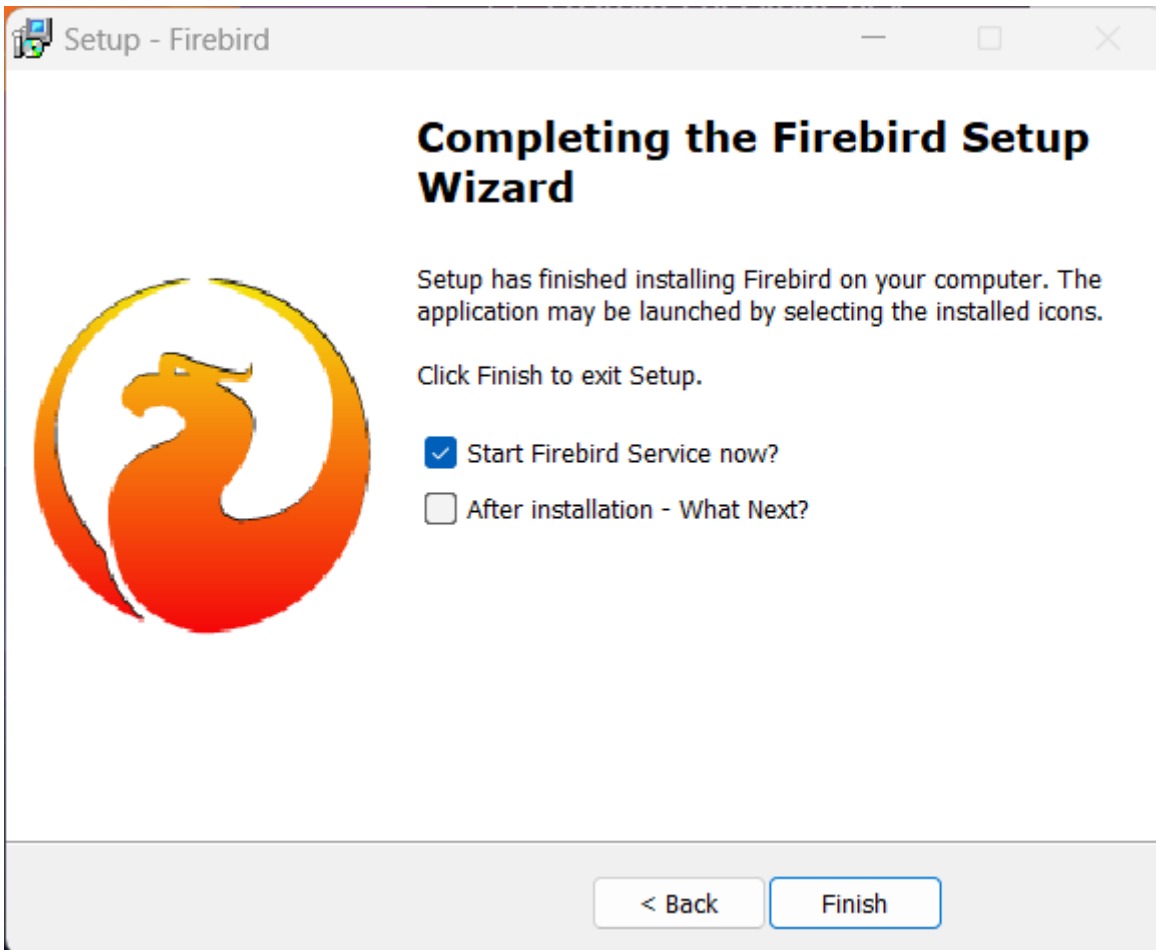
Click on [Next >]



Select

- Start Firebird Service now

Click on [Finish]



Revision #1

Created Mon, Nov 20, 2023 8:19 PM by [Alex](#)

Updated Mon, Nov 20, 2023 8:31 PM by [Alex](#)