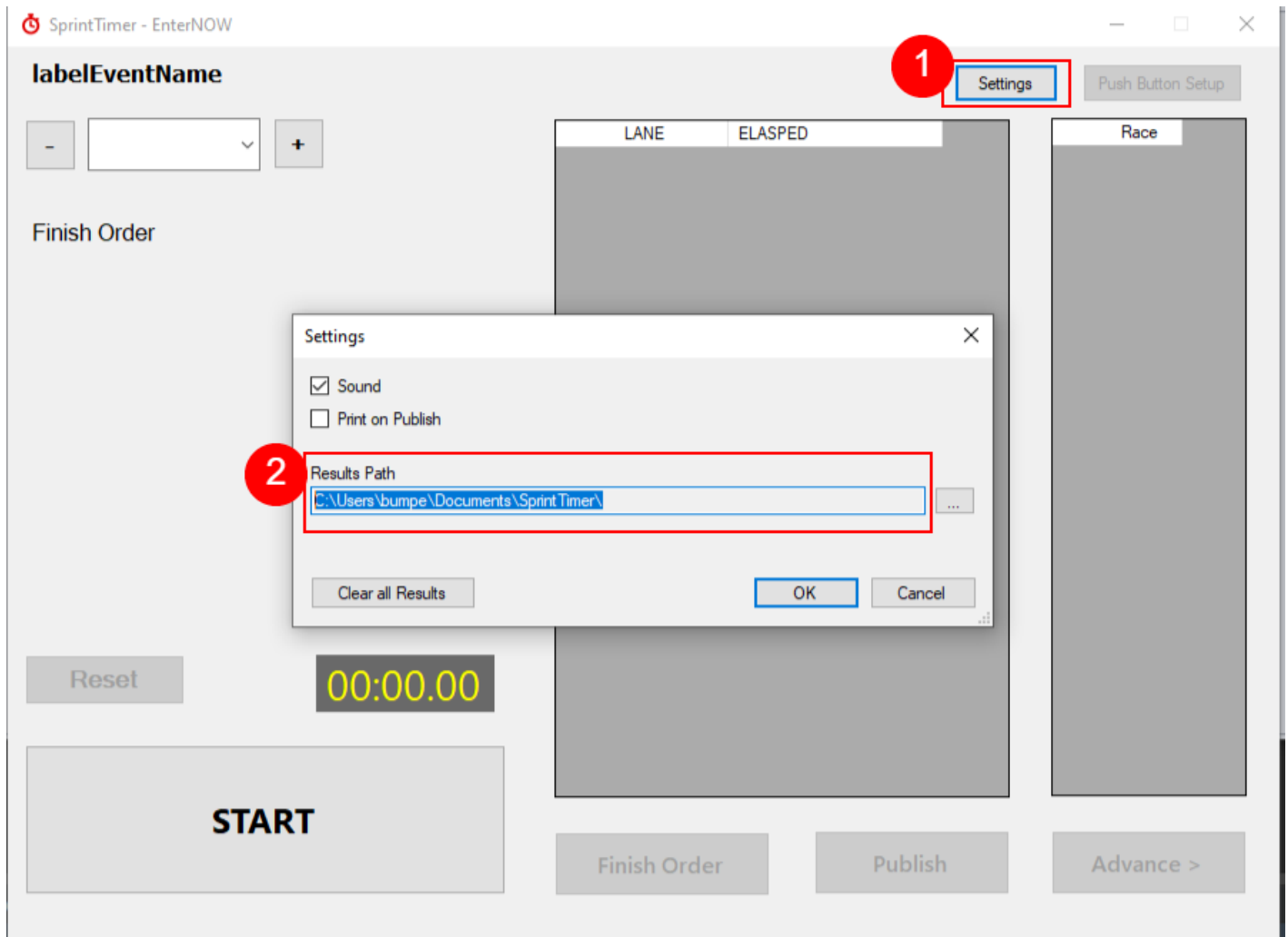


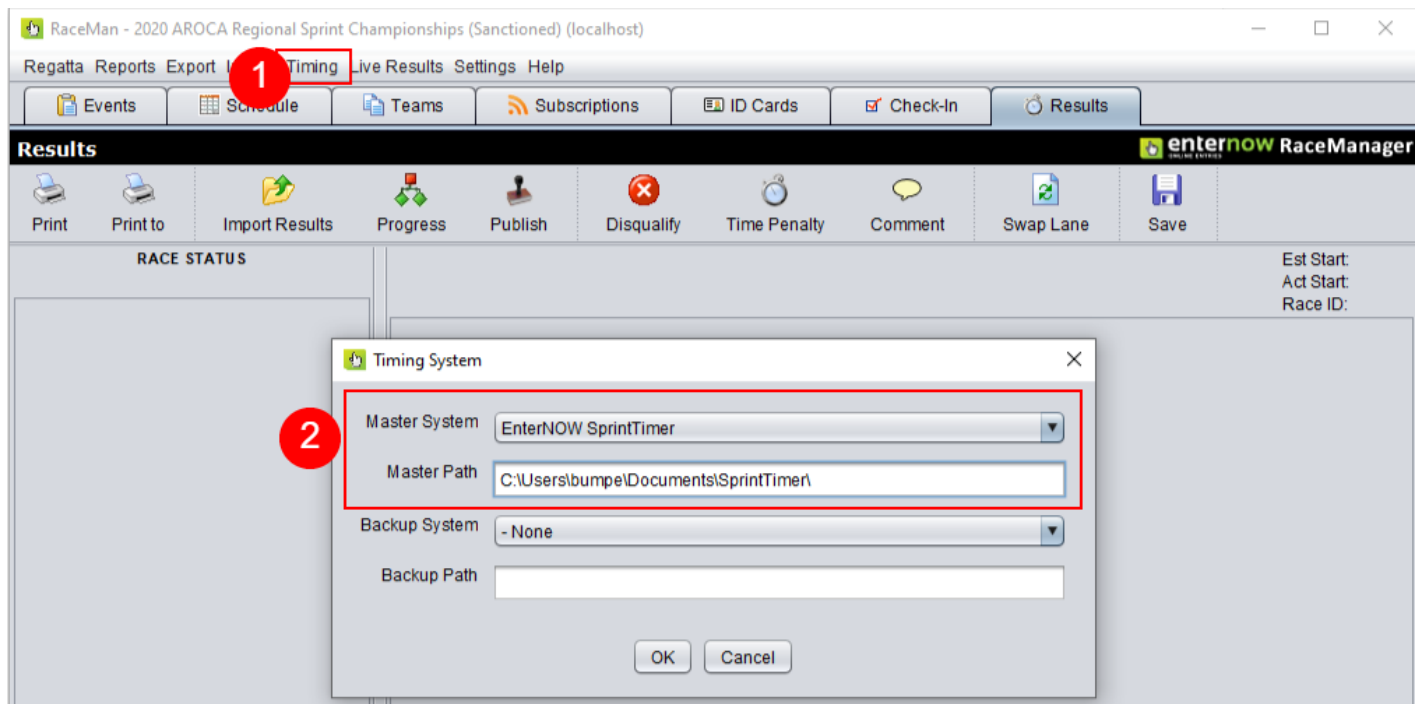
# Linking Raceman and SprintTimer

In SprintTimer click on [Settings] and copy the Results Path



If you are running SprintTimer on a different computer to RaceManager, you will need to map a network folder that can be used by both. We recommend making that folder on the SprintTimer computer so that if there is a network outage, your results will still be able to be saved, for processing later.

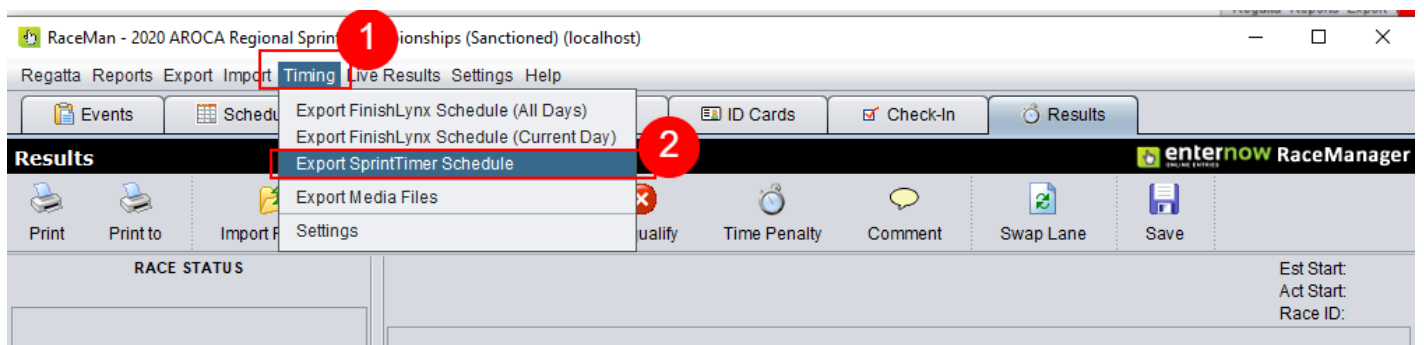
In RaceManager go to **Timing** > **Settings** in the menu.



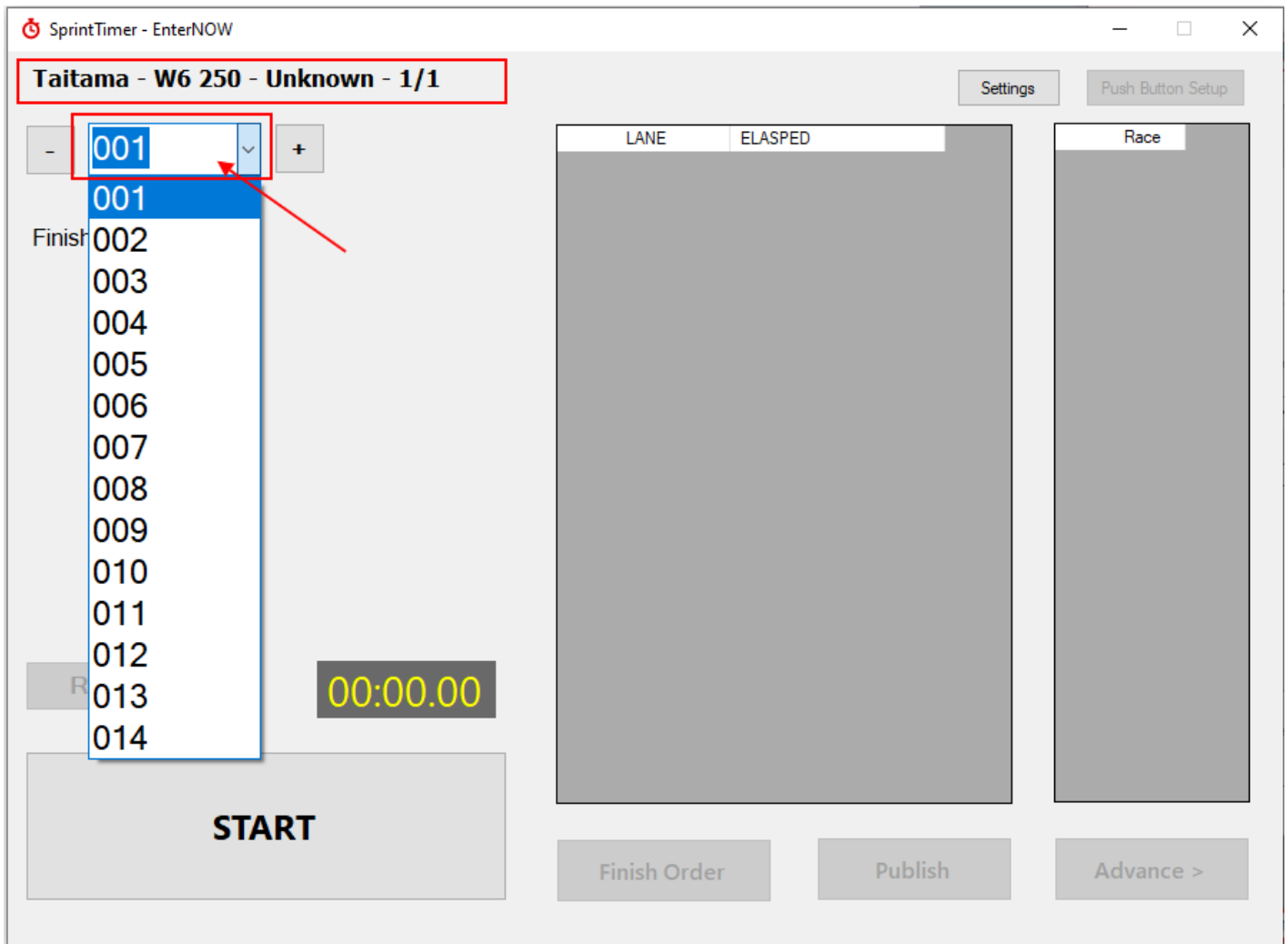
Select EnterNOW SprintTimer from the droplist and paste the Results path into the field below, then click on [OK]

If you are using SprintTimer as your main timing system, then you need to set it up as the Master System. If you have a Finish Lynx or other camera, then it is common to setup SprintTimer as the Backup System

In RaceManager from the menu, click on **Timing** > **Export SprintTimer Schedule**



In SprintTimer click on the race droplist and select an race number, that name of the race will be displayed, confirm the event name is as expected.



Revision #3

Created Fri, Jul 24, 2020 5:29 AM by [Alex](#)

Updated Tue, Dec 8, 2020 8:16 PM by [Alex](#)