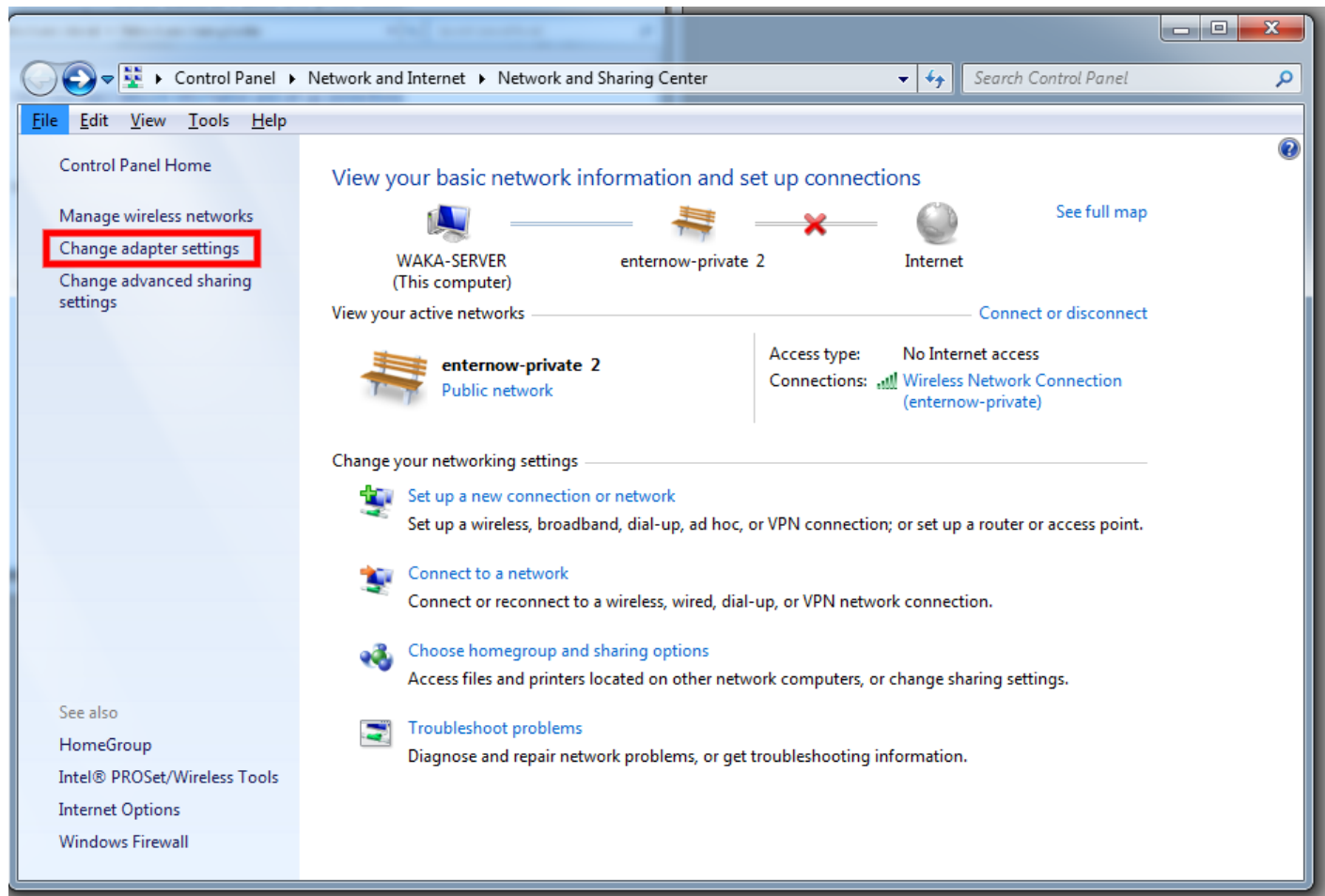


Networking 2 windows computers via a Switch

Go to the **Start Menu** and type in **Network and Sharing Center**

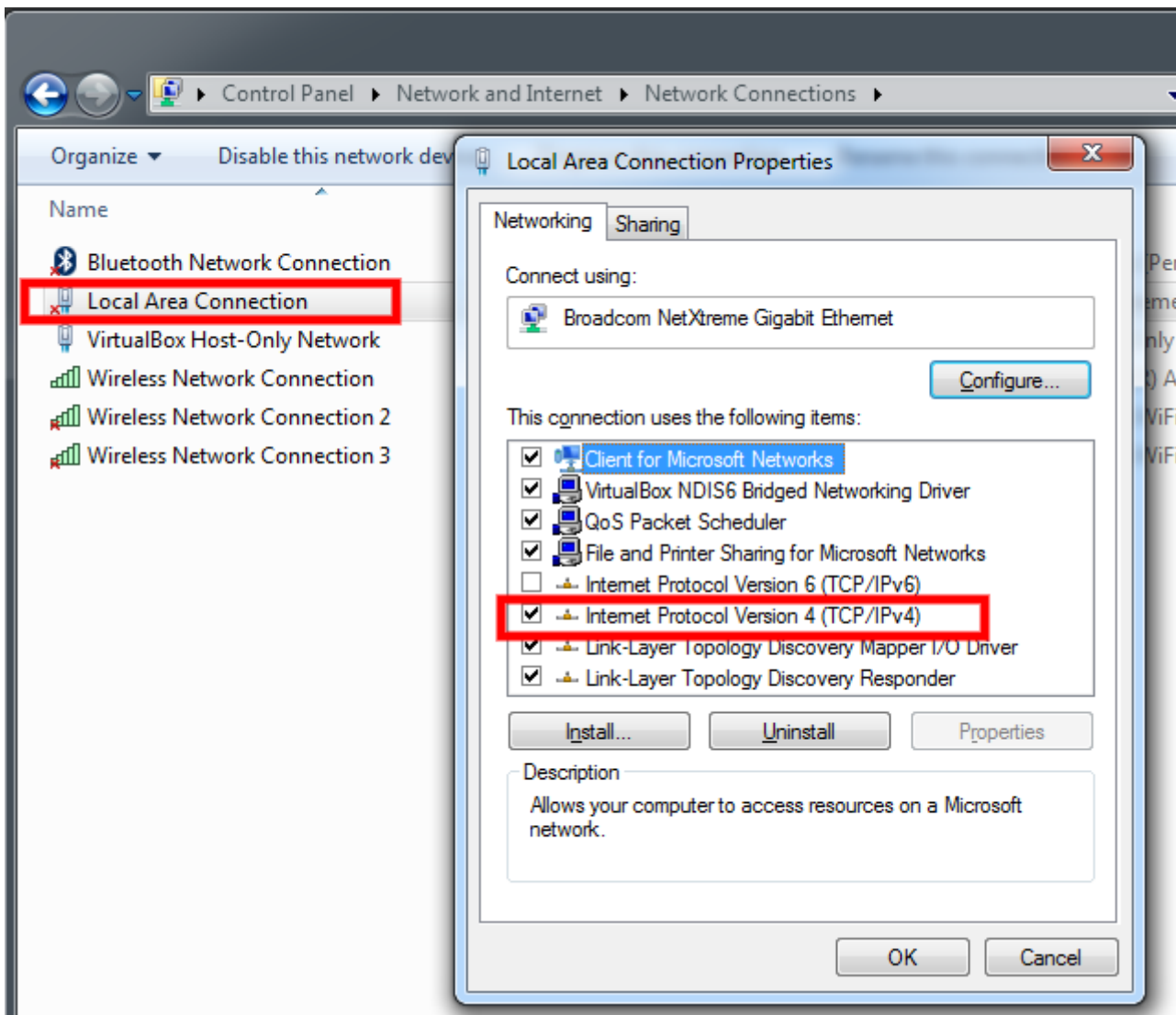
Open the Network and Sharing Center

Click on the left hand side, **Change adapter settings**



Double Click on **Local Area Connection**

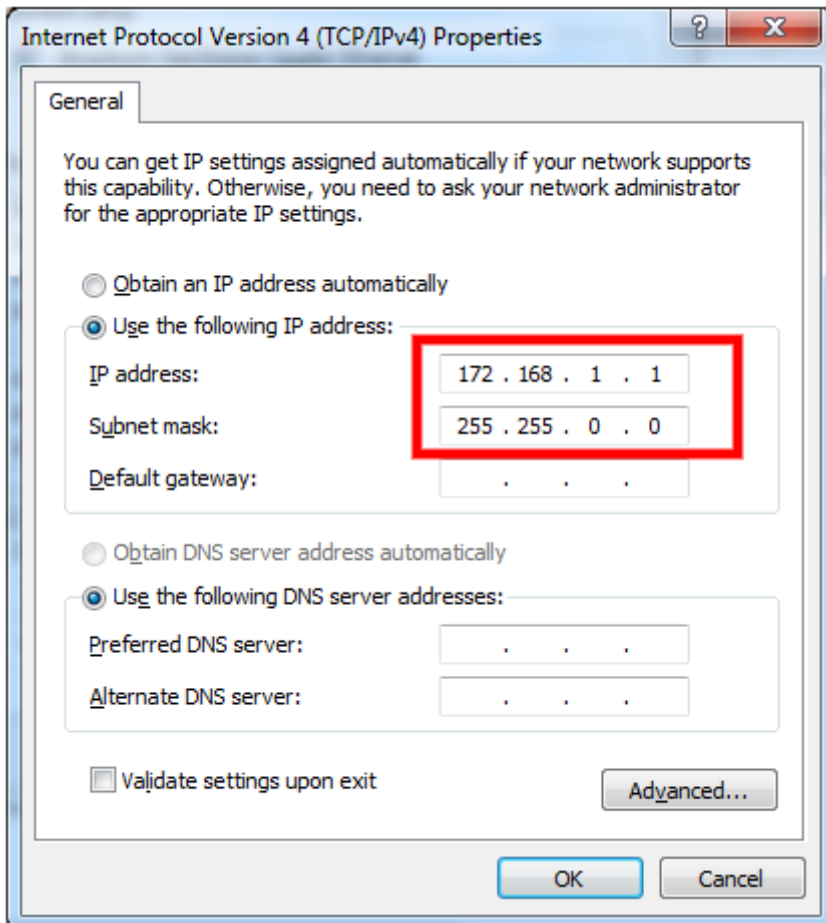
In the next window **double click** on **Internet Protocol Version 4 (TCP/IPv4)**



Click on **Use the following IP address**

On computer A type **172.168.1.1** and press [**OK**]

On computer B type **172.168.1.2** and press [**OK**]



Connect both computer with network cables to the switch

To test the connection is working

Go to the start menu and type **cmd** and press [**Enter**]

From Computer A type `ping 172.168.1.2` and press [**Enter**]

and from Computer B type `ping 172.168.1.1` and press [**Enter**]

The ping should show reply received, if it shows ping timed out, that means it is not working.

```
C:\Users\wakaama>ping 172.168.1.1
Pinging 172.168.1.1 with 32 bytes of data:
Control-C
```

Revision #2

Created 24 July 2020 05:26:39 by Alex

Updated 1 December 2020 18:34:55 by Alex